

BLACKLAND BULLETIN



Andrea Gibbs
Hyde/Tyrrell Co. Ag Agent
252-542-9300

The Blackland Farm Managers Tour is On!

We are so excited to announce that the 51st annual Blackland Farm Managers Tour will be held Wednesday, August 4th in Washington County. This year's hosts are Manning Bros. Farms and Donald's Flying Service. Parking will be available at Donald's Flying Service (5212 NC-99, Roper) and plots will be across the canal with the Mannings!



Registration begins at 7:00 AM
Field tours begin at 8:15 AM
Sponsored meal at noon
Pesticide & CCA credits will be available



Speakers Include: Drs. Ron Heiniger, Rachel Vann, Charlie Cahoon, Wes Everman, Luke Gataboni, Chad Poole, Dominic Reisig & Rod Gurganus

In the event of rain, we will meet at Dark Water Enterprises, Inc.
(7111 NC-99, Pantego)

Scouting School - July 21 - Swan Quarter

There will be a soybean and cotton scouting school on July 21st at 10:00 am. We will meet in the multipurpose room of the Hyde County Government Center in Swan Quarter and then move to the field for hands-on demonstrations!



Don't Stop Scouting!



After a weird year of COVID, 2021 seems to be flying by faster than ever! I can't believe it's already July. I know everyone usually takes some time off in July and starts getting excited about harvesting corn, but your soybeans still need you! Keep an eye out for those yield robbing insects and diseases! If you're not comfortable with your scouting abilities or want to refresh your memory, be sure to attend the Scouting School on July 21 in Swan Quarter. If you are unable to attend, I would be glad to come help you identify insects and/or answer any questions you may have!

Defoliating Insects: Bean leaf beetles (can feed on pods later in the season), Japanese beetles, green cloverworm, armyworms, soybean loopers, velvetbean caterpillar

Pod/Seed/Stem Feeders: Stink bugs, kudzu bugs, Corn earworm

Defoliation Threshold: 30% defoliation throughout the plant canopy 2 weeks prior to blooming (R1) and 15% defoliation throughout the entire canopy 2 weeks prior to flowering until the pods have filled (R7-R8). See images on the next page for information on estimating defoliation.

Kudzu Bug Threshold: 5 bugs/plant until mid-July. After mid-July, use a sweep net to collect several randomly selected samples of 15 sweeps/sample from the interior of the field. Threshold after mid-July: 15 nymphs/15-sweep sample

Stink Bug Threshold: See table below.

Corn Earworm Threshold: Scan the following QR code or visit <https://go.ncsu.edu/cewthreshold>. Corn earworms usually curl into a tight circle when disturbed and have 4 sets of pro legs.

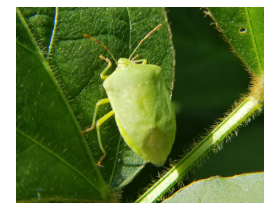
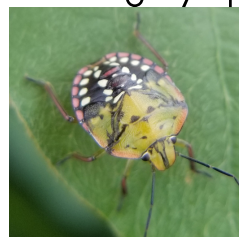


Kudzu bug nymph.

Stink Bug Thresholds

Producer Type	Seed and Edible				Grain			
Row Width (in)	7	14	21	30-40	7	14	21	30-40
Beat Cloth (per row foot)				0.5				1
Sweep Net (15 Sweep SAMPLE)	2.5	2.5	2.5		5	5	5	
Rigid Beat Cloth (per row foot)	0.2	0.2	0.3		0.4	0.4	0.6	

Stink Bug Nymph



Stink Bug Adult

Estimating Defoliation



% Defoliation

Estimating Insect Defoliation in Soybeans

- 1 Remove leaves from top, middle and bottom of plant.
- 2 Remove the highest and lowest defoliated trifoliate. Keep other leaflet.
- 3 Repeat for the middle and bottom leaves on the same plant.
- 4 Repeat 1 - 3 on 10 more plants.
- 5 Repeat at 4 more locations and take average defoliation of all 40 leaves.

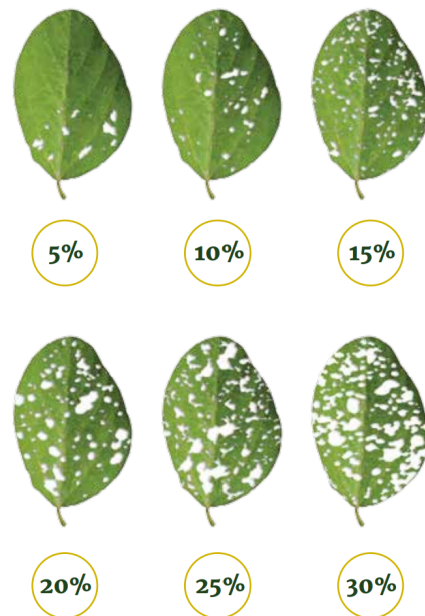
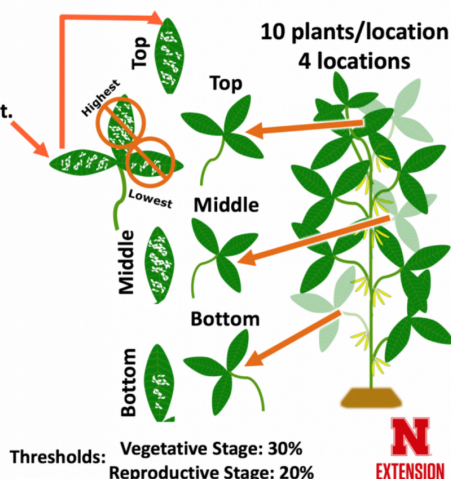
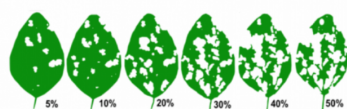


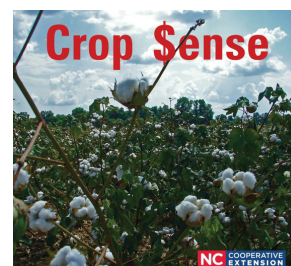
Figure 2. Infographic by Justin McMechan

Extension Podcast: Crop Sense

North Carolina Soybean Scouting & Field Guide | 73

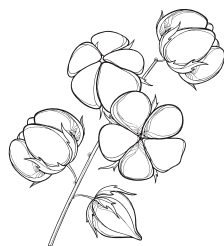
Are you tired of hearing the same songs on the radio all day in the tractor? Check out Jacob Morgan's (Jones Co. Ext Director) podcast! The podcase provides updates on current row crop topics.

Apple- tinyurl.com/CropSenseonApple
Google- tinyurl.com/CropSenseonGoogle
Spotify- tinyurl.com/CropSenseonSpotify
Stitcher- tinyurl.com/CropSenseonSistcher
Amazon- tinyurl.com/CropSenseonAmazon
...or simply ask ALEXA to play the Crop Sense podcast!



Stay Safe!

Andrea Gibbs



Hyde/Tyrrell Co. Ag Agent
252.542.9300 (cell)
andrea_gibbs@ncsu.edu

NC Cotton Field Day

The NC Cotton Field Day will be held on Thursday, September 16th at the Upper Coastal Plain Research Station in Rocky Mount from 11:30 am until 5:00 pm.
(2811 Nobles Mill Pond Rd)
Visit cotton.ces.ncsu.edu for more details!